

ForeSight

The logo for ForeSight features a stylized, multi-colored starburst or spark graphic positioned above the letter 'S' in the word 'Sight'. The starburst consists of several sharp, triangular points in shades of red, blue, green, and yellow, radiating from a central white point.

the future is clear.

Welcome to ForeSight.

This document will help you understand how to use and operate ForeSight.

ForeSight is a fully functional digital chart projection system. The current system requirements are a computer with the following specifications:

Windows XP (SP2 or SP3)/Vista/Windows 7/Windows 8
 Mac OS X 10.5 or Newer
 800MhZ Processor or Better
 512MB of Memory (1GB recommended)
 ~25MB Hard Drive Space (36MB for Mac Users)
 Any Graphics Processor (Supporting Dual Monitors Optional)
 (ATI Raedon Series Recommended or 128MB of Video Memory)
 OpenGL 2.0 or Higher
 One (or Two) USB 2.0 Port(s) (optional)
 WiFi Connection (optional)
 Internet Connection (optional)

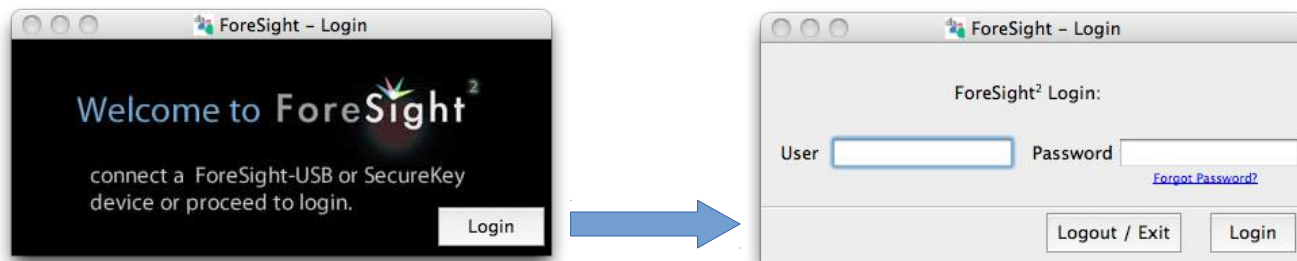
Table of Contents:

System Requirements.....	Page 2
ForeSight Setup.....	Page 3
Options.....	Page 6
Optotype.....	Page 7
Keymap.....	Page 8
Modern Mode.....	Page 9
Classic Mode (Depreciated).....	Page 10
Offline Registration.....	Page 12
Troubleshooting and Updates.....	Page 12

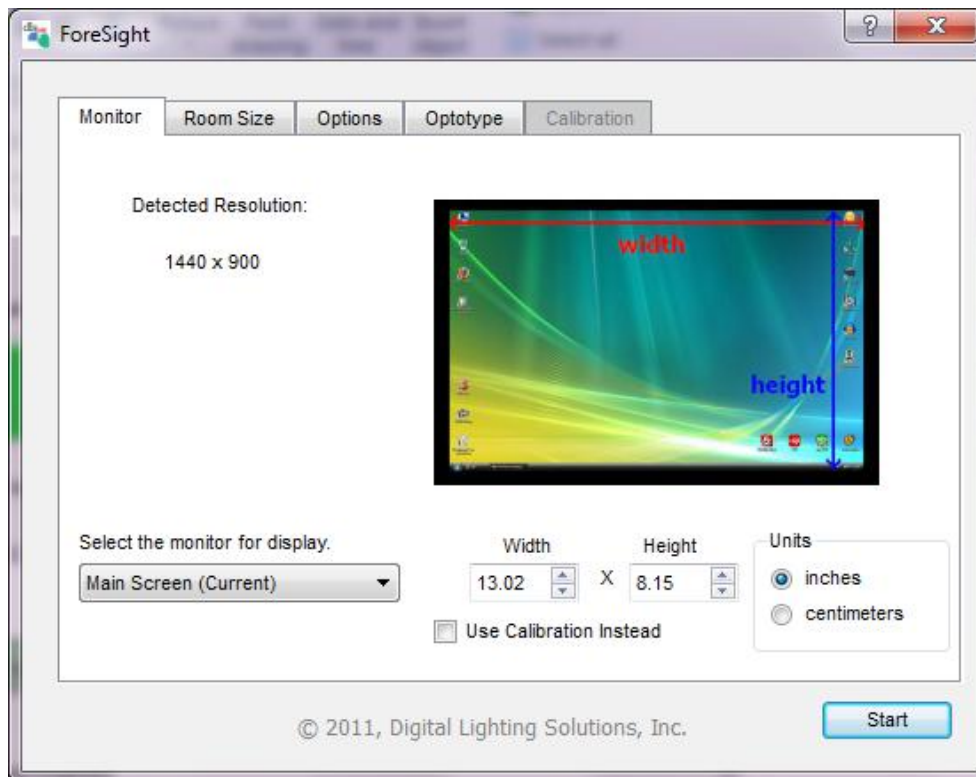
Digital Lighting Solutions maintains and updates this document regularly be sure that you have the newest version of both by checking www.foresighteyes.com/support.html for revisions.

How do I setup ForeSight?

When you open ForeSight, the welcome message (below left) appears:



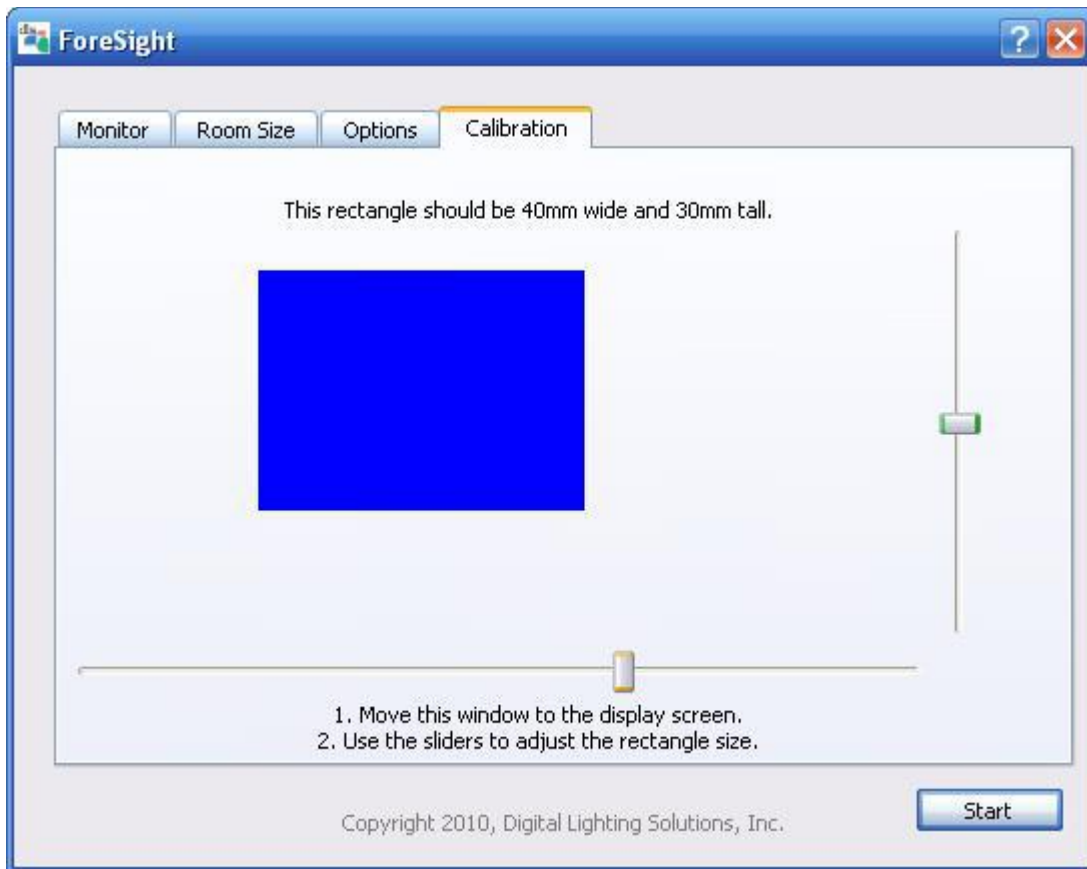
Click 'Login' and in the appropriate spaces input your User and Password information.



Once you have connected the appropriate device or logged in, the next window you see will be the configuration window.

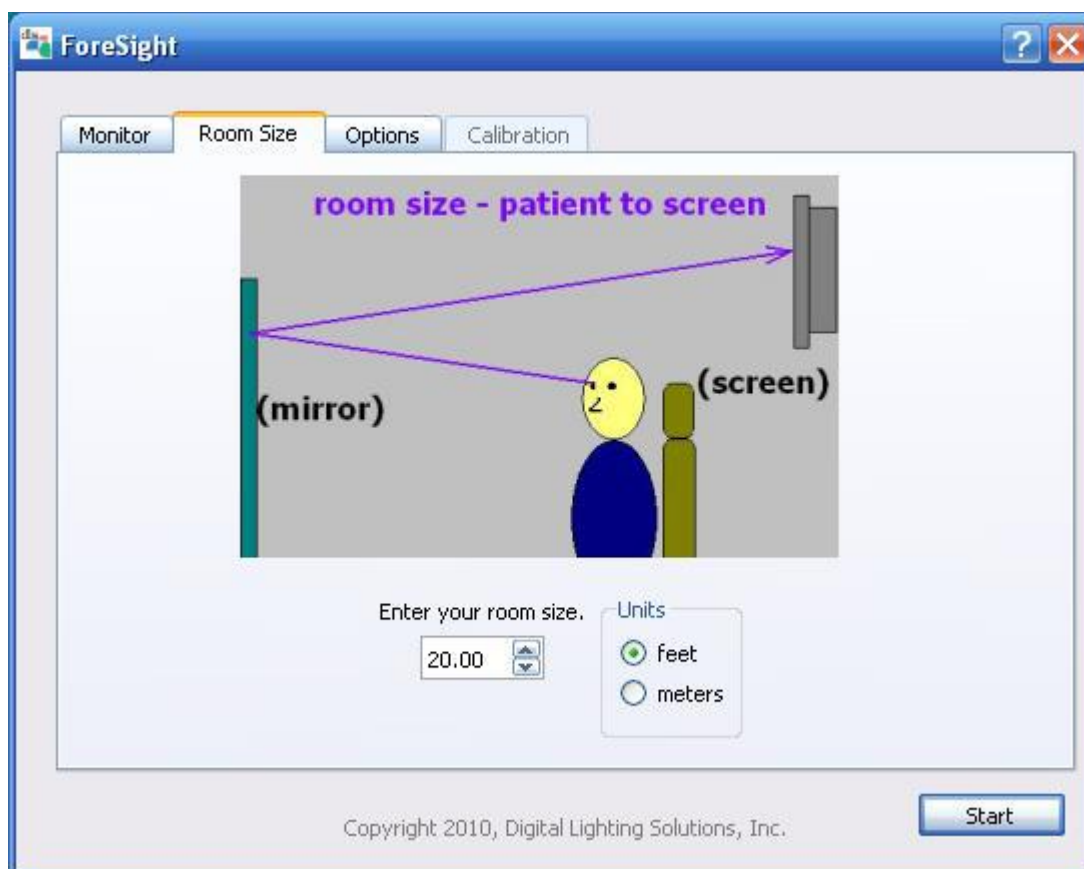
On this window you can select the Monitor you would like to use for your acuity test. Measure that monitor in inches or centimeters and input that information in the 'Width' and 'Height' boxes and select the appropriate unit. Accurate information about your screen is required for ForeSight to display correctly. This step is very important. If you do not wish to measure your screen, or you do not have a large enough ruler, check the 'Use Calibration Instead' box. This will enable the Calibration tab on the top of the window.

The calibration window looks like this:



Use a PD stick, or millimeter ruler to adjust the size of the blue rectangle. Use the sliders to adjust the width and height. *It is very important to drag the Calibration window to the screen that will be displaying the acuity test BEFORE measuring it.* Once you have measured it, you can drag the window back to your main display.

Click on the 'Room Size' tab:

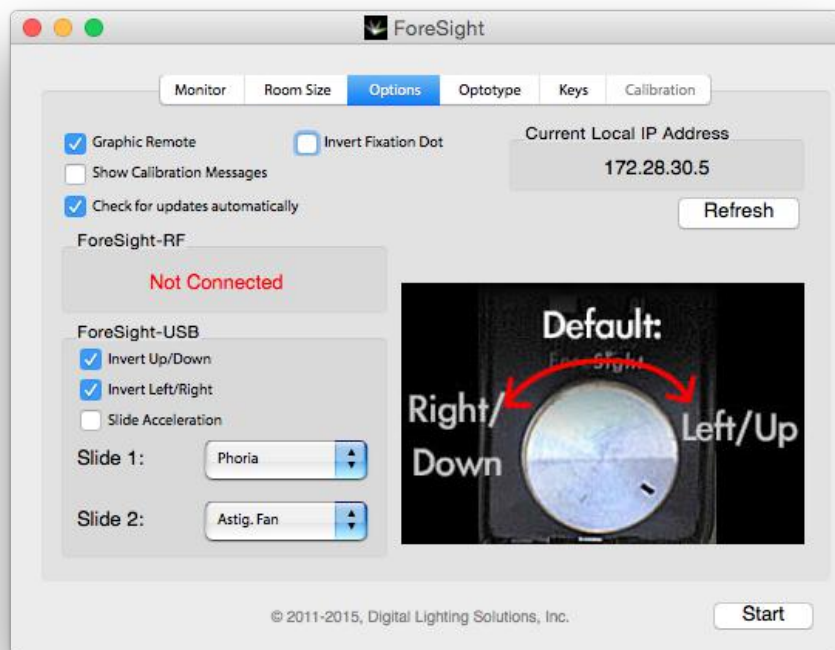


A standard room is set up to be 20 feet long, this means 20 feet from the patients eyes to the screen. It is always a good idea to check this by using a tape measure and measuring the length of the room and adding it to the distance from your chair's headrest to the mirror. If you set the display directly in front of the patient, be sure to input this distance in the room size box. It is not recommended to set the display directly in front of the patient unless you have a giant monitor and very high resolution. The letters will have to be displayed smaller and you may lose accuracy in your exam. But alas, the opportunity is there.

Now you have set up your projector. The options tab allows you to enable or disable the graphic remote, and enable or display calibration messages, that tell you the calculated size based on your input values. (This mode should only be used when calibrating the projector, or setting it up on a new monitor or screen) Since not all monitors are the same, you should enable the calibration messages and make sure the letter size corresponds to the message. If it does not, you should first recheck your room size and monitor size (or rectangle size). If you still cannot get the right size letter, use the +, -, [, and] keys to fine-adjust the letters. NOTE: This is not a recommended method as it will reset every time you start the program.

Options

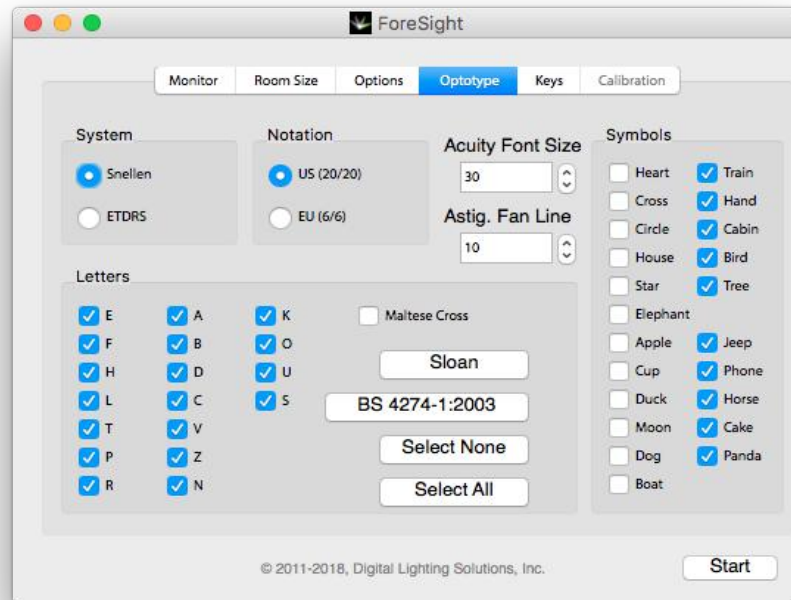
The 'Options' tab contains settings relating to devices connected to ForeSight VA as well as settings that affect other areas of the program.



Graphic Remote:	Sets the default visibility of the mouse controlled graphic remote control. Checked=Visible
Show Calibration Messages:	When checked, shows exact sizing information about each slide in Modern Mode, this can be used to make fine adjustments to the letters.
Check for Updates Automatically:	When checked, ForeSight will automatically check for updates when the program starts.
Invert Fixation Dot:	Check this box to switch between black dot white background and white dot with a black background.
Current Local IP Address:	Displays your current Local IP Address. This value can be used when connecting a ForeSight-RF device for wireless control. Press 'Refresh' to update the value. It will display 'Not Available' if there is no IP Address or if ForeSight encounters an error when assessing this value.
Devices – ForeSight-RF:	This box displays the connection status of your ForeSight-RF device. Connected=ForeSight-RF Device Paired and ready to use. Not Connected=ForeSight-RF Device is not paired with this system.
Devices – ForeSight-USB:	The image to the right shows the default orientations for the USB emulator. When unchecked, the device will behave as described by the image on screen. When checked, the device will behave opposite to this image. If Slide Acceleration is checked, the slide will move with acceleration and deceleration. Otherwise, it will move with a more one-to-one look.
ForeSight-USB – Slide ½	These drop down menus will allow you to change what slides appear when the quick screening function of ForeSight classic mode is used.

Optotype Settings

To configure symbol sizing and enable or disable letters, click on the tab labeled 'Optotype'.



Acuity Font Size:

Enter a font size in this box, the program will use this size when displaying the Acuity Hint.

Astig. Fan Line

Enter a pixel width for the lines in the Astigmatic Fan slide.

System And Notation:

Select the desired measurement system from the top of this tab. The Snellen system is the default system and most commonly used in most practices. It bases the exam sizing on a standard distance of 20 feet (or 6 meters if EU Notation is selected). If ETRDS is selected, the sizing of the symbols will be spaced at 0.10 Log increments, and every line will have five symbols. NOTE: ETRDS mode may not display correctly if your display monitor is not large enough.

Letters:

When selecting letters, remember at least 4 letters must be selected for your exam to be accurate. Checked letters will appear in the examinations. Unchecked letters will not appear. Check the box "Maltese Cross" to replace the plus or cross with a Maltese Cross in Symbols mode.

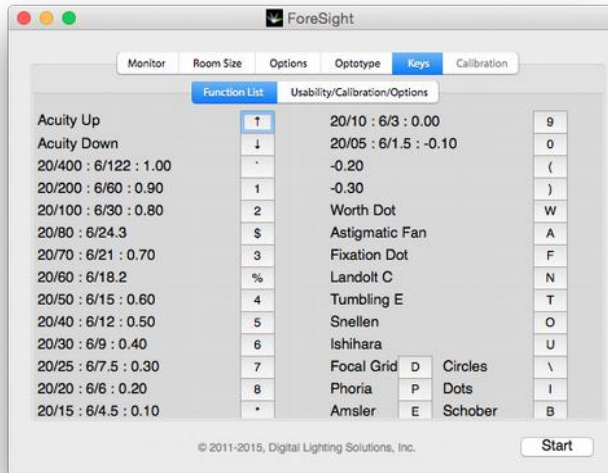
Additionally, you may select from the Sloan or BS 4274-1:2003 mandated set of letters. (These are common letter sets)

Symbols:

There must be at least 4 symbols selected at any time, but this section will allow you to choose which symbols are displayed. Be aware that if you select less than 9 symbols, you will have duplicate symbols on the smaller lines.

Keymap Settings

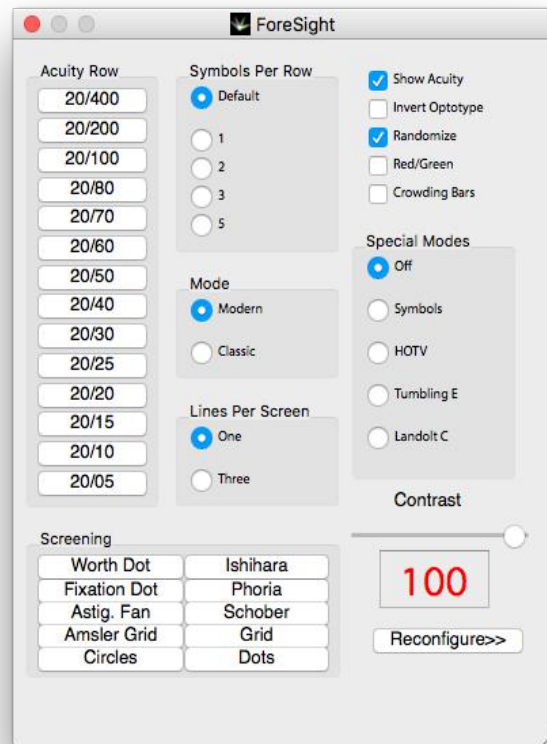
To configure the keyboard commands click on the Keys tab:



To set a key, click on the button to the right of the function you desire to change, then press the key that you wish to map to that command. To cancel selecting a key press Escape or wait 5 seconds and the Key Change Dialog window will disappear. If you wish to return the keys to their defaults, press the 'Defaults' button.

How do I use ForeSight in Modern Mode?

Modern Mode can be controlled in many ways. The default method of control is the Graphic Remote:



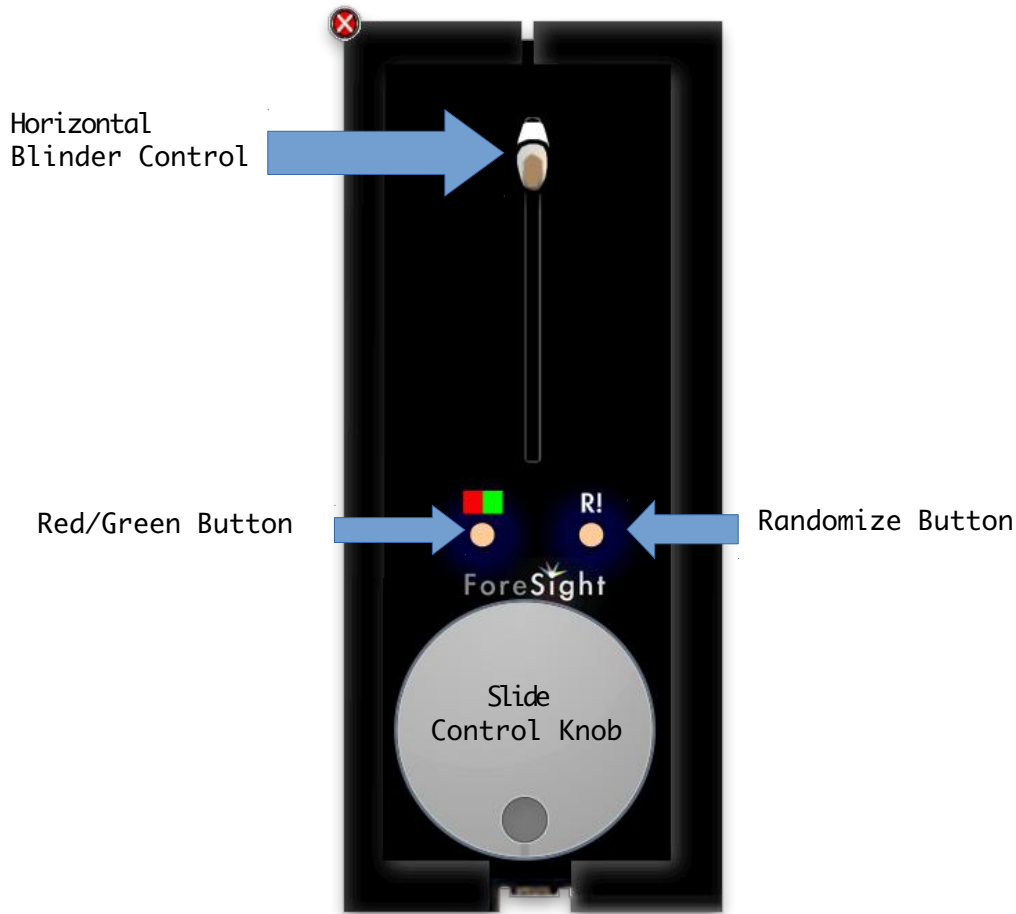
The graphic remote will look somewhat like this, and offers complete control over your acuity test. Each mode can be accessed by clicking on the appropriate button, check box, or radio dial. Also, clicking Reconfigure will allow you to return to the configuration screen and enable you to recheck your measurements. There are also keyboard commands that correspond to these controls, it is recommended that you print out a list of these commands, in case you forget. The command list can also be displayed by pressing the 'H' key when the projector is in Modern Mode.

A final method of control is offered by ForeSight-RF, a touchscreen implementation of the graphic remote. Information about ForeSight-RF can be found at www.foresighteyes.com/foresightrf.html.

How do I use ForeSight Classic mode? (Deprecated)

To control ForeSight Classic mode, you must use the ForeSight-USB emulator. Select the Classic radio button on the graphic remote. The ForeSight-USB remote is modeled after a standard chart projector and allows for complete control of Classic Mode.

The standard function of the buttons are depicted in this picture, a list of the standard functions are as follows:



Move Slide: To move the slide up or down, rotate the 'Slide Control' knob.

Red/Green: To enable/disable Red/Green mode, simply press the 'Red/Green' button.

Slide Change: To randomize slides, press the 'Randomize' button. The available slides will cycle between 4 randomized sets.

Horizontal Blinder: To use the horizontal blinder, set the blinder's position by moving the 'Horizontal Blinder Control' slider.

The standard functions will get you through many exams, but more advanced control may be necessary. Here is a list of more advanced features:

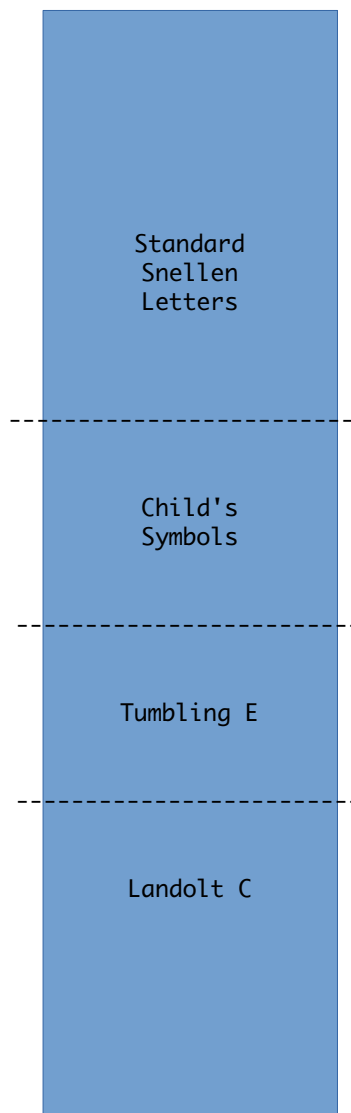
Vertical Blinder: To access the Vertical Blinder, move the 'Horizontal Blinder Control' to the position that isolates the row you are using. Then press the 'Red/Green' button. The Vertical Blinder can now be controlled with the 'Slide Control' knob. To exit this mode, press the 'Red/Green' button, or clear the Horizontal Blinder, by sliding it back to the top.

Quick Screening 1/Quick Screening 2: To quickly show either of these charts, move the press and hold the 'Randomize' button for 2 seconds. Each subsequent time you press the Randomize button, you will cycle between Astigmatic Fan, Fixation Dot, and regular slide mode. To quickly exit this mode, simply rotate the 'Slide Control' knob, clear the Horizontal Blinder by sliding it back to the top, or press and hold the 'Randomize' button for another 2 seconds.

Contrast Adjustment: To adjust the contrast of the letters, press and hold the 'Red/Green' button for 2 seconds. This will bring up a contrast slider that can be adjusted using the 'Slide Change' knob. Repeat this process to hide the menu.

Every slide is arranged in this way:

To get to a different section, scroll down to it. The slide will move faster when you turn the knob faster.



Offline Registration.

To enable offline access to ForeSight, open the software and navigate to the Login screen. Open the 'Account' menu and select the 'Register' option. Enter your registration code, emailed to the account we have on file, into this window (NOTE: You must have an internet connection for this one-time validation):



If the registration code is accepted, your copy of ForeSight will be activated for that computer.

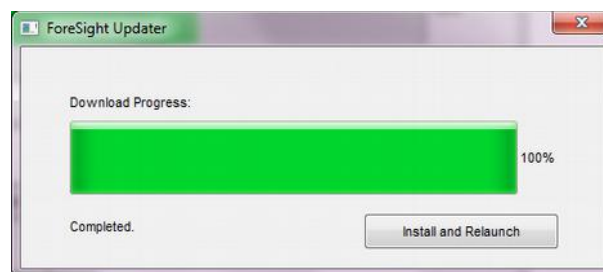
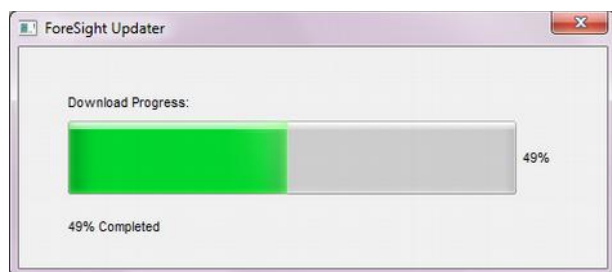
Troubleshooting and Updates.

ForeSight support is available Monday through Friday 9AM – 5PM EST by phone and online. More information about support can be found at:

<http://foresighteyes.com/support.html> .

You can always download the latest version of ForeSight at . <http://foresighteyes.com/download.html>

If you want to check for updates from ForeSight, open ForeSight, select the Menu entitled “Updates” and Click the menu option “Check for Updates”. The automated update system will check for and update, then download and install the update at your request.



The ForeSight Update Manager will run in the background, but if you close the window with its “X” button, OR close ForeSight, the Update Manager will stop and remove all of the downloaded files. You will have to start the update from scratch at this point.

Connection Errors and their meanings:

Error (100): ForeSight thinks its connected to the internet, but something has prevented it from accessing the server.

Error (90): ForeSight is connected to the internet, but receiving error messages from the server, this could be due to a proxy or firewall interference.

Error (20): ForeSight is not connected to the internet at all.

If you are using the ForeSight Standard package and your internet connection fails you will receive these warnings in order:



When you see the first warning, you have one hour to reconnect to the internet before ForeSight will log you out. When the second warning appears, you have 30 minutes left to resolve your internet problems.

If you forcibly quit the ForeSight application or close the program with commands such as Ctrl-Q (Cmd-Q for Mac users). The computer will remain logged in to ForeSight. To account for this user, you MUST login from the same computer that was improperly shut down and then logout by pressing the ESC key from any window for your login id to be used on another computer.